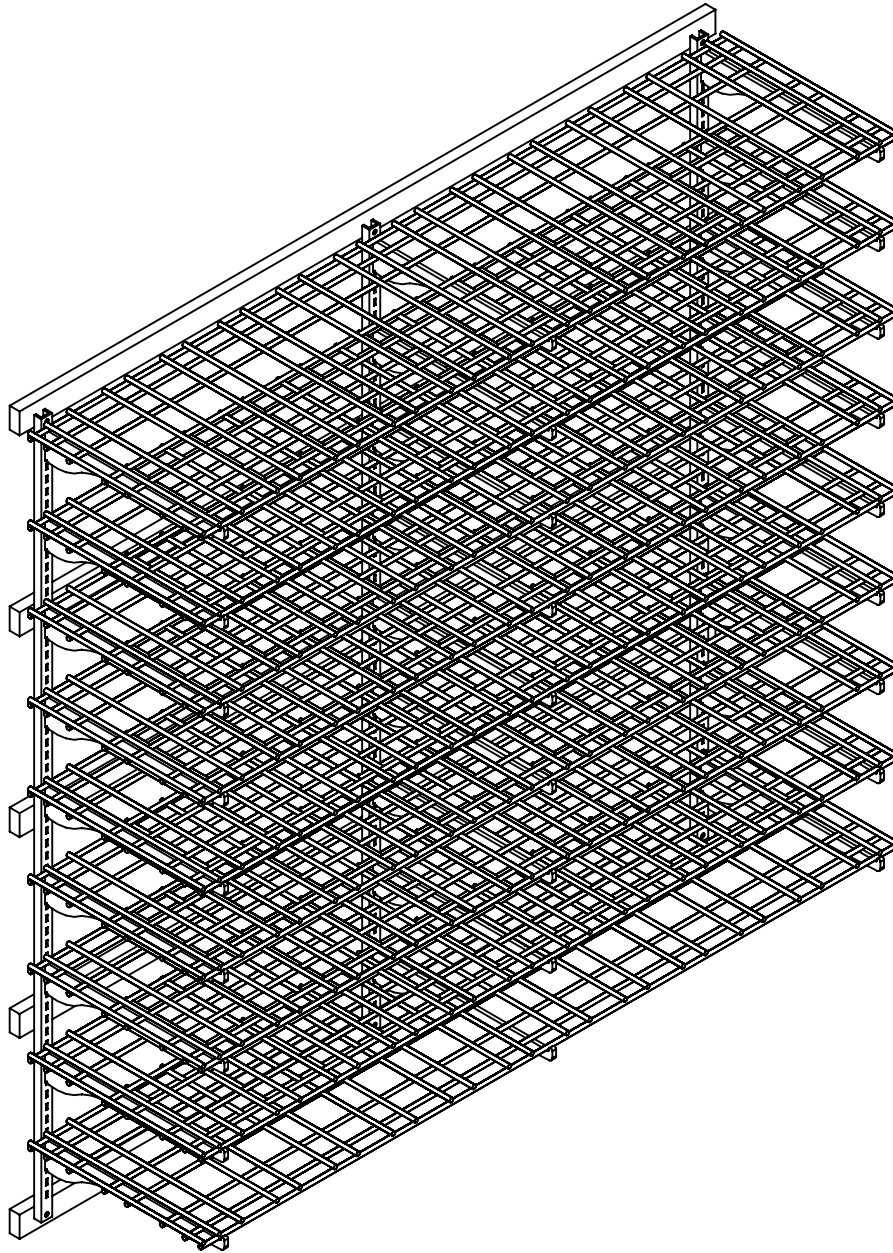


WineZone Wine Shelving

New 10/21/2014

4 FOOT KIT OPTION



WZ-4FOOT-KIT1 shown all throughout the manual.

Thank you for your purchase from Wine Cellar Innovations. In the manufacturing and packaging of your products numerous people have reviewed your order for accuracy and attention to detail. We believe this focus is what has made us the worldwide leader in wine storage products.

When assembling the products, please refer to the instructions provided and follow them closely. Always pre-drill pieces any time a screw will be used as a fastener. The cellar has been engineered with the weight of the bottles factored into the layout, and will be capable of sustaining loads far greater than this when assembled correctly.

If you happen to break a piece during installation we will replace it for free. In such a situation, feel free to contact us Monday through Friday between 8am and 5pm Eastern time.

Wine Cellar Innovations
4575 Eastern Avenue
Cincinnati, Ohio 45226

Phone: (800) 229-9813
Fax: (513) 979-5280
www.winecellarinnovations.com

WineZone Wine Shelving

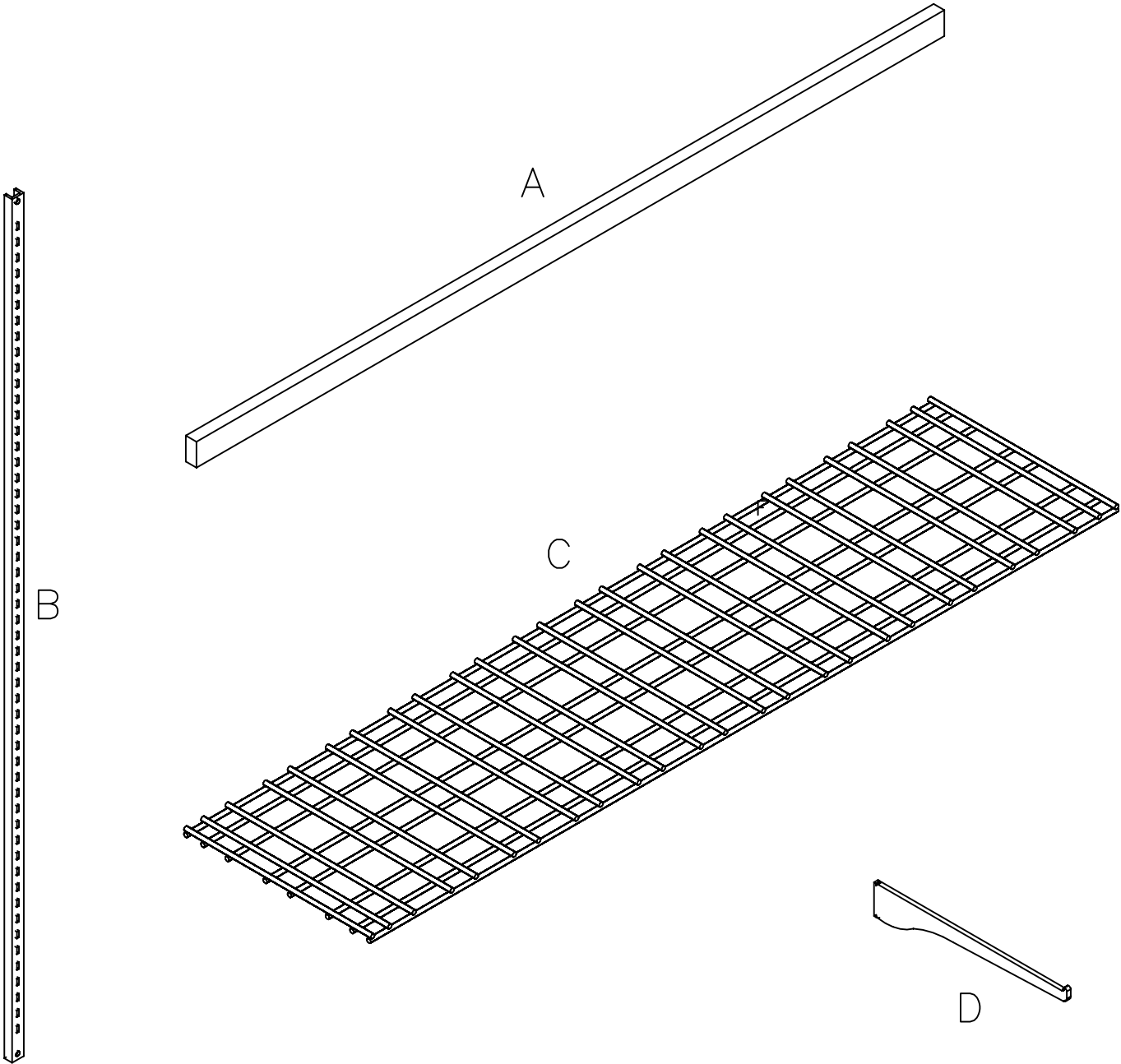
Parts List

WZ-4FOOT-KIT1

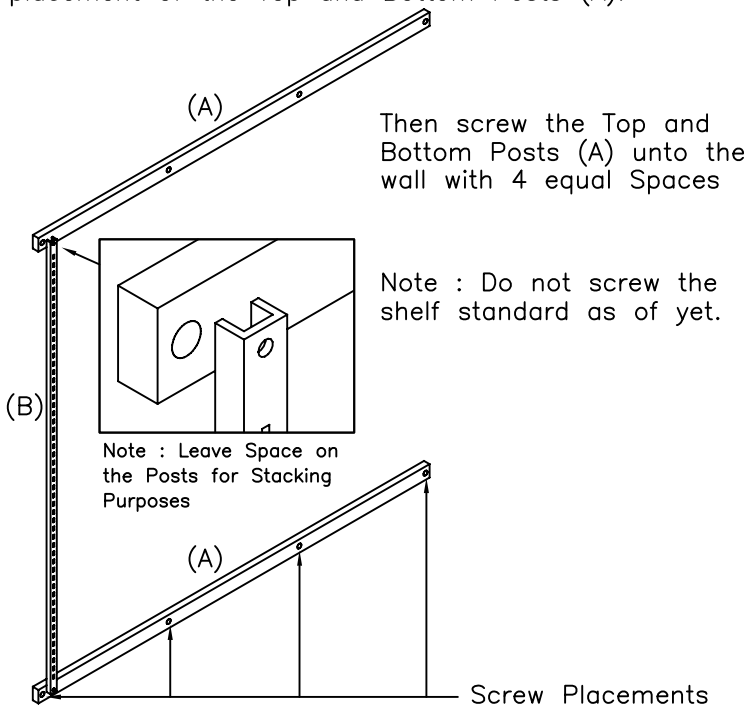
#	qty.	description
A	5	1x2 Posts
B	3	Shelf Standard
C	9	Metal Wine Shelves
D	27	Shelf Brackets
*	1	Hardware Pack

WZ-4FOOT-KIT2

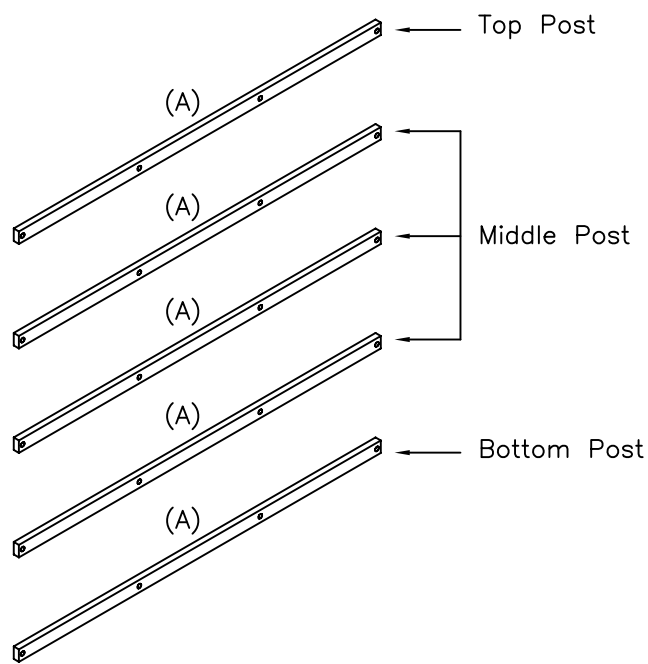
#	qty.	description
A	5	1x2 Posts
B	3	Shelf Standard
C	12	Metal Wine Shelves
D	36	Shelf Brackets
*	1	Hardware Pack



1. Use the Shelf Standard (B) as Guide for the placement of the Top and Bottom Posts (A).

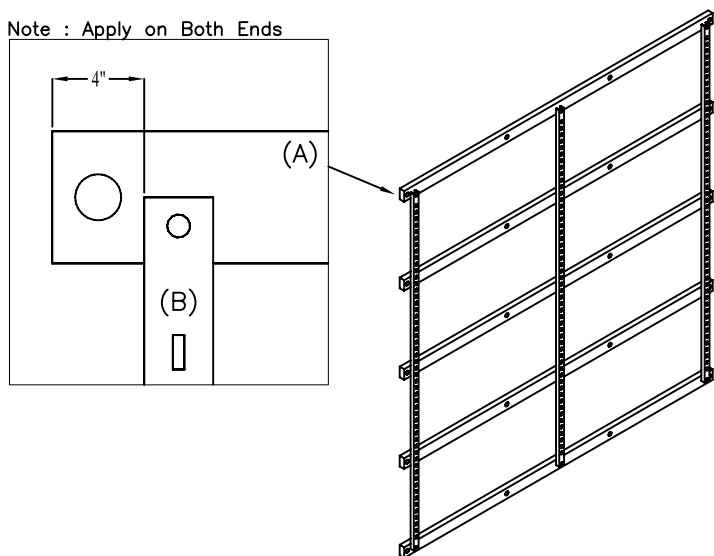


2. Screw Middle Posts (A) with Equal Spaces.

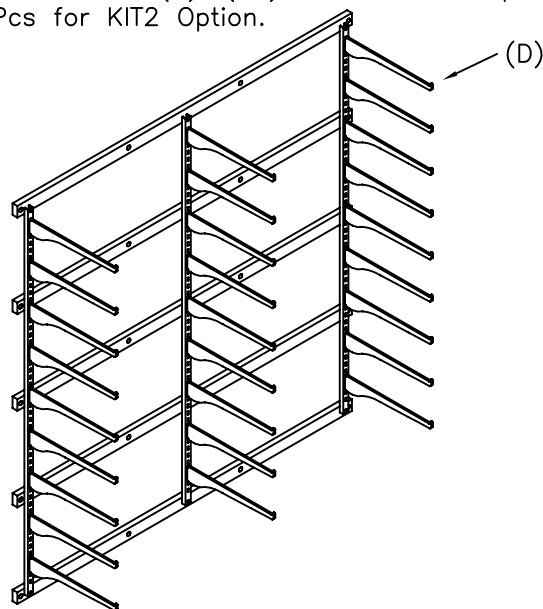


3. Screw the 3 Shelf Standards (B) into the Posts (A). Leave 4" space at the ends of the Posts.

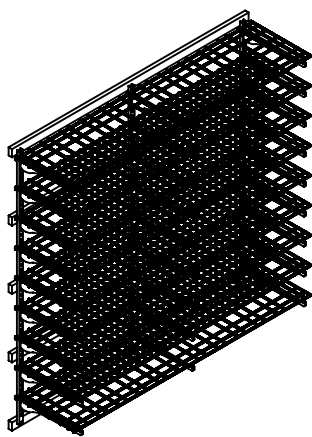
Note : Apply on Both Ends



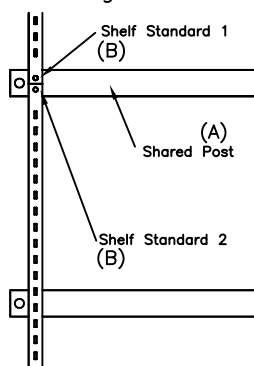
4. Attach Shelf Brackets (D). (27) Pcs for KIT1 Option and (36) Pcs for KIT2 Option.



- Final.
- Place Metal Wine Shelves (C). (9) Pcs for KIT1 Option and (12) Pcs for KIT2 Option.



For Stacking Options, Share Posts and Connect the Standard Shelves together.



Optional.

Wood Shelf Sold Separately for for Bottle Cases and other Misc Items.

